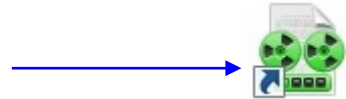


Installing and Configuring the Liberty Player to Work with Your Foot Control

**Make sure your Foot Control is plugged into your computer*

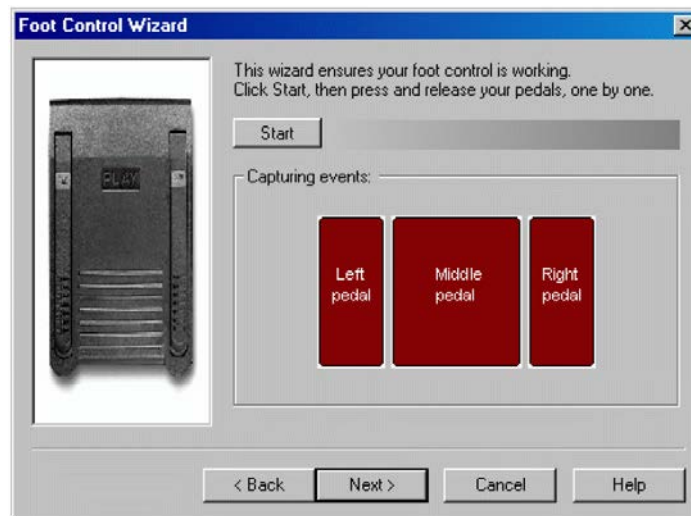
1. From the Windows desktop, **OPEN** (Double-Click) the Liberty Player icon.



2. From the pull-down menu, select View/Options/Foot Control. Put a check next to **Enable Foot Control**.



3. Click the button labeled, **Foot Control Wizard**. Complete the wizard.



4. Once the wizard is complete, click **Set pedal functions**. This dialog lets you assign functions for each device pedal and enables you to control the playback of sound data.

with each pedal.

Available functions:	Pedals:	Left	Middle	Right
Step back by <input type="text" value="5"/> sec.		<input checked="" type="radio"/>	<input type="radio"/>	<input type="radio"/>
Rewind with <input type="text" value="1.5"/> times normal speed		<input type="radio"/>	<input type="radio"/>	<input type="radio"/>
Play while pressed / Stop when released		<input type="radio"/>	<input checked="" type="radio"/>	<input type="radio"/>
Play / Step back by <input type="text" value="2"/> sec. when released		<input type="radio"/>	<input type="radio"/>	<input type="radio"/>
Step forward by <input type="text" value="5"/> sec.		<input type="radio"/>	<input type="radio"/>	<input type="radio"/>
Forward with <input type="text" value="1.5"/> times normal speed and step back by <input type="text" value="0"/> sec. when released		<input type="radio"/>	<input type="radio"/>	<input checked="" type="radio"/>
Switch between the playing channels		<input type="radio"/>	<input type="radio"/>	<input type="radio"/>

OK Cancel

5. Once you configured the foot pedals, click **OK**.
6. Click **OK** to return to the Player window.